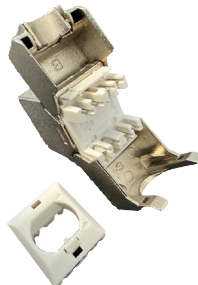
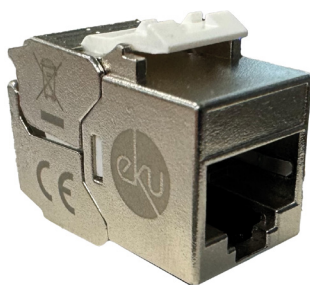


RJ45 - Keystone module, Cat. 6A, E-Stone HighSpeed series



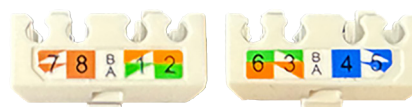
Use

Highly shielded and downward compatible Cat.6A Keystone module (**). It offers simple assembly with the highest performance and supports all today's applications such as 10 GBase-T. special housing design ensures fast and safe Wire contacting without the use of special tools. Compact module allows 24 ports on half a height unit and is UAE compatible.

Features

Design-capable (UAE), suitable for distribution panel and junction box installation, CAT 6A with IDC insulation displacement terminals. The module is certified by an independent test laboratory. Transmission path (channel link) or installation path (permanent link) according to class EA (ISO/ IEC 11801), can be used to set up 2 connector class EA channels, supports 10GBase-T in channel and permanent link, keystone dimensions according to industry standard, can be rewired e.g. in the event of incorrect assignment, suitable for PoE/PoE+ according to IEEE 802.3af/at.

Wiring



Standards

ANSI/TIA-568-C Cat.6A
EN 50173-1: Class EA
ISO/IEC 11801: Class EA
ISO/IEC 60603-7-5

RoHS
Compliant

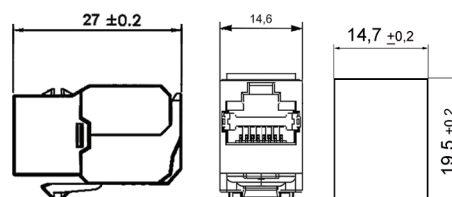


REACH
Compliant

Product data

Cable feed::	rear (max. Ø 8 mm)
Connector standard:	IEC 60603-7-5
Insertion force:	≤ 20 N
Mating cycles (RJ45 side):	≥ 750
Housing material:	Zinc die casting
Material insulating parts:	PC
Gold plating in the contact area:	0,15 µm (6 pinch)
Contact:	AWG 26-22 (solid)
Cable diameter:	6 - 8 mm
Connection class:	IP 20
Current carrying capacity at 50°C:	0,6 A
Weight:	approx 18 g

Drawing

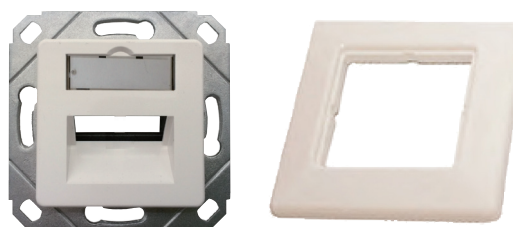


Temperature range

Use in dry or damp rooms without condensation.
Storage temperature range: -40 to +70 °C
Operating temperature range: -10 to +60 °C

Use

UAE support frame for installation in a cable duct (EK), for Flush-mounted installation (UP) or, using a separate frame, also for surface-mounted installation (AP). By breaking away two Mounting brackets also allow floor tank mounting (BT). These UAE support frames can be fitted with UAE central plates and Cover frames from various switch range manufacturers. An intermediate ring may be necessary for assembly.



Designation	version	Dimensions (WxHxD)	Articel No.
E-Stone HighSpeed Modul	Kat.6A	14,6 x 19,4 x 27 mmt	t66853000
support frame for HighSpeed series	1way, with cover frame and central plate	80 x 80 mm	t66853929
support frame for HighSpeed series	2way, with cover frame and central plate	80 x 80 mm	t66853930

Netzwerktechnik

Hinweis:

(**) nicht geeignet zur Aufnahme von Telefonsteckern (RJ11, RJ12 etc.)

Abbildungen ähnlich, technische Änderungen vorbehalten